



Entanglement rates of *Zalophus Californianus* in Two Rookeries along the Northern California Coast

A senior thesis by: Christina Langford
Advisor: Patrick Robinson, PhD





**Anthropogenic
disturbances
threaten marine life**



Survey sites



Ano Nuevo Island



Monterey Coast Guard Pier

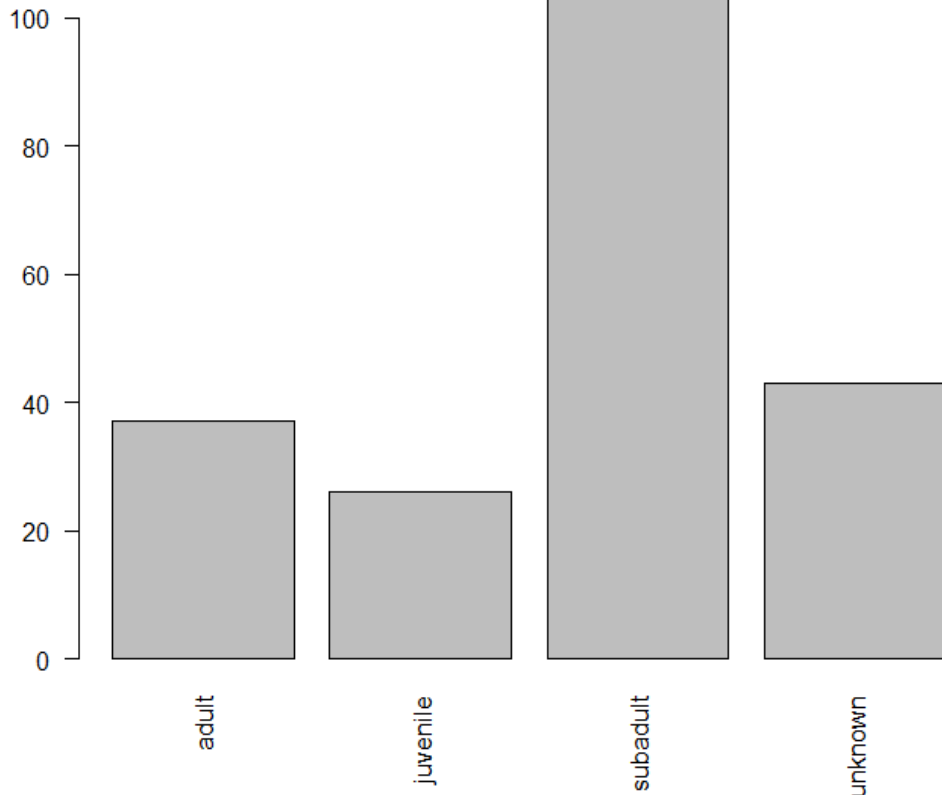
Average entanglement rate by site

<u>Ano Nuevo Island</u>	<u>Monterey Coast Guard Pier</u>
Percentage Entanglement by Survey	Percentage Entanglement by Survey
0.39	0.41
0.34	0.33
0.25	0
0.22	0.5
0.52	0.5
Average Percentage: 0.344%	Average Percentage: 0.348%

P = 0.9711

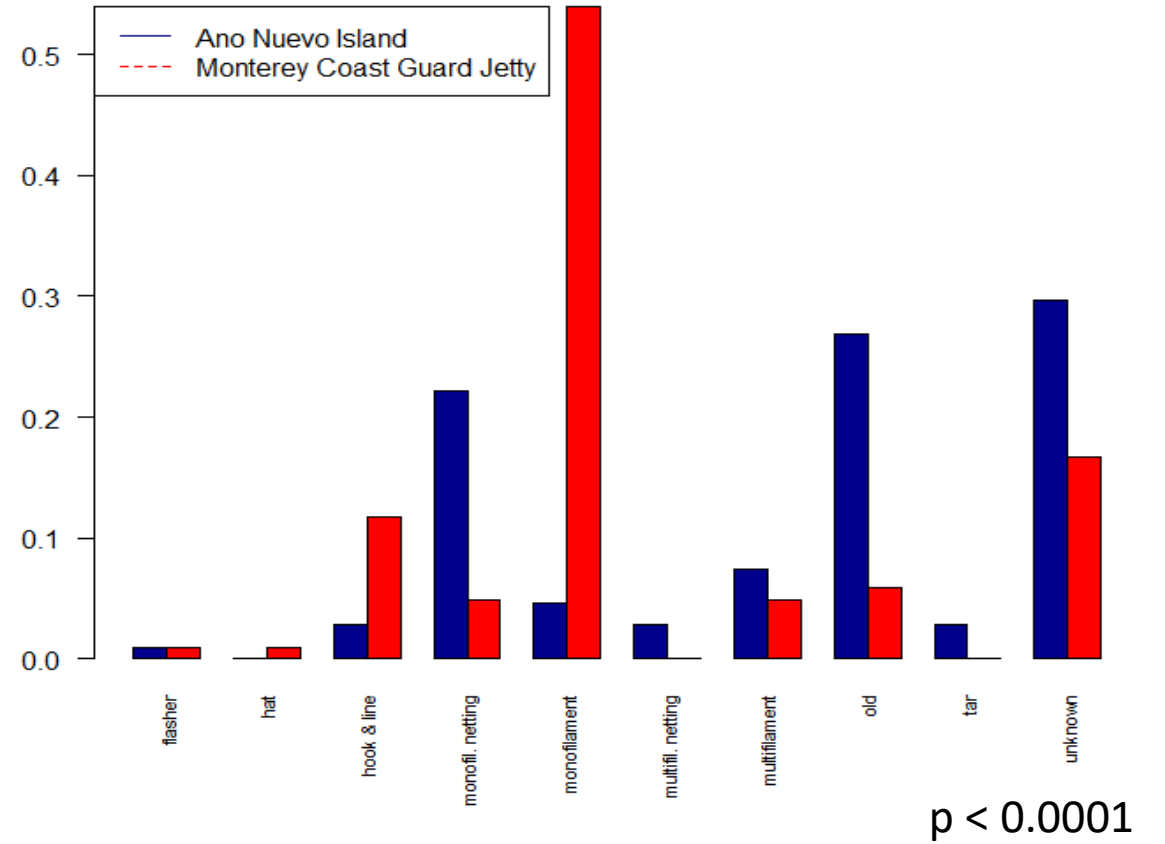
Types of entanglements by site

Number of Entangled Individuals of each Age Class



n = 210, p < 0.0001

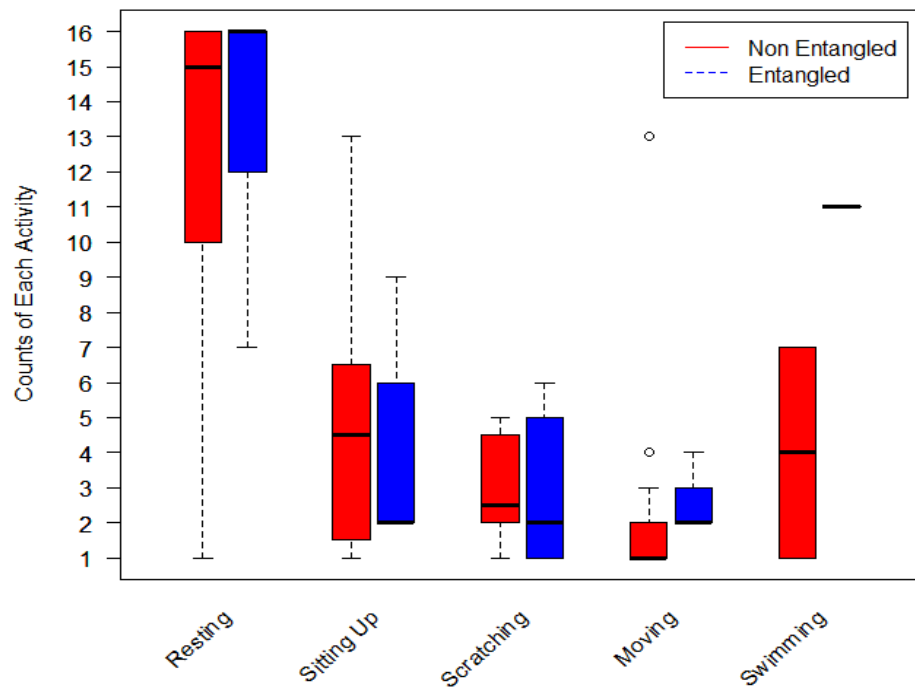
Proportion of each type of entanglement



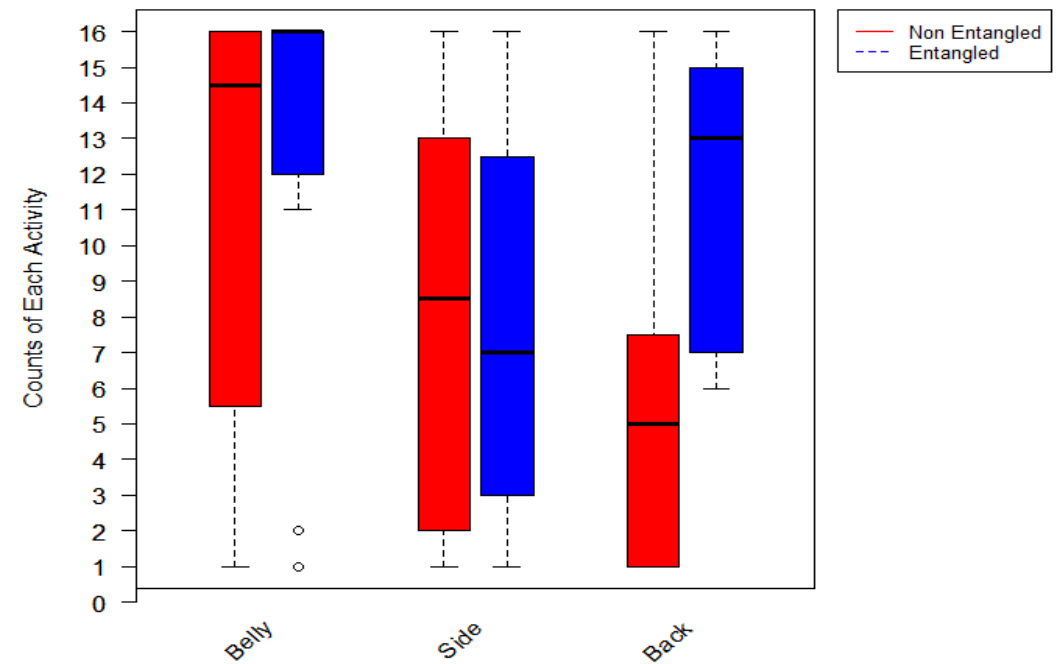
Age class differences in entanglement rate

Focal Follows

Focal Follows By Activity



Focal Follows By Position



- Sites were found to have the same entanglement rate: $\sim 0.3\%$
- Coast Guard Pier is a popular recreational fishing site
- Aggregated age class entangled showed a disproportionate affect on subadults





THANK YOU!

- My Advisor, Patrick Robinson
- EEB Department
- Costa Lab
- Gilbert Toledo
- Marge Brigadier

