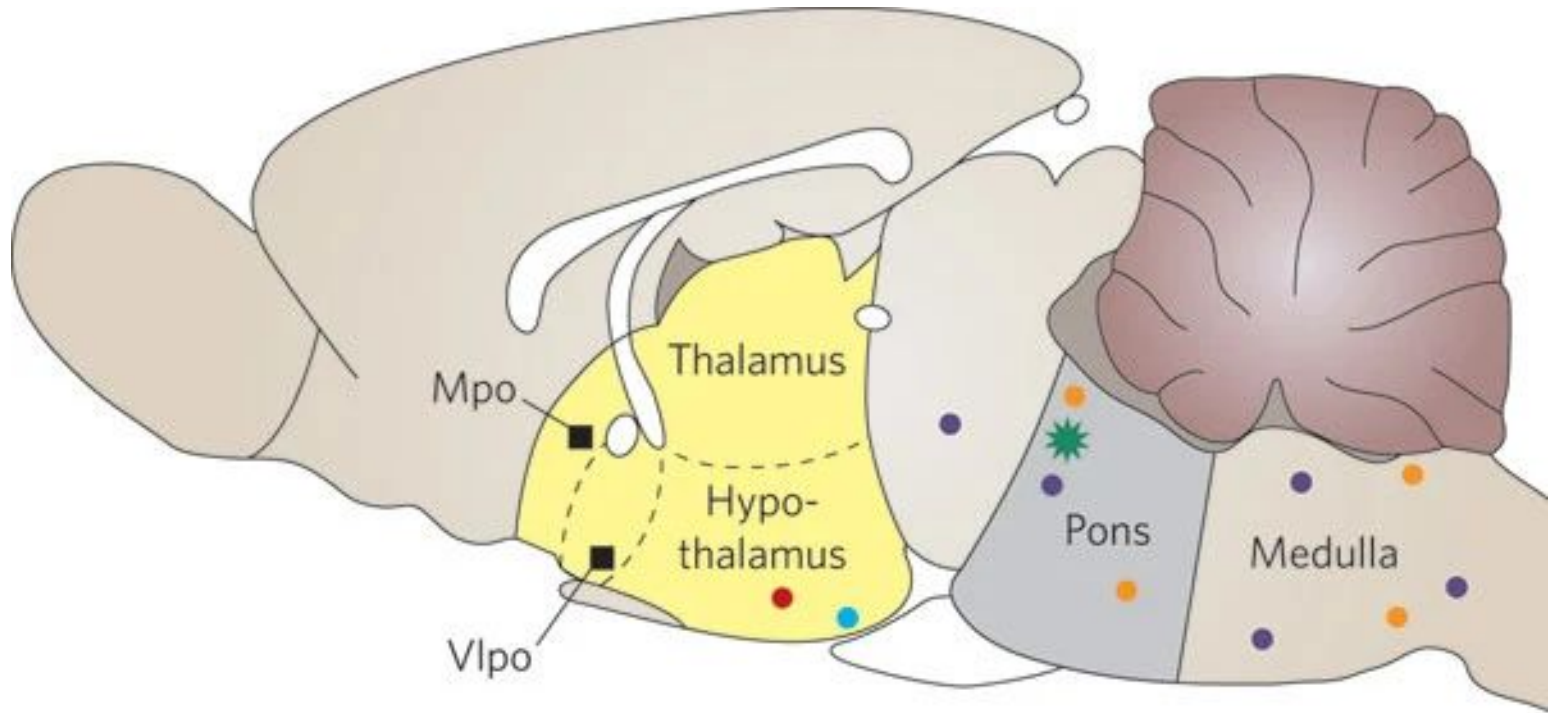




# From Above, Below or Within?

Drivers of Sleeping Strategies in Mammals

Ishana Shukla





<b>Order</b>	<b>Number of Study Individuals</b>
Metatheria	5
Proboscidea	2
Primates	44
Rodentia	30
Lagomorpha	6
Perissodactyla	6
Carnivora	83
Artiodactyla	38
Chiroptera	3

-Species

-Habitat

-Trophic level

-Phylogenetic History

-Sleeping Strategy



Temporal Avoidance



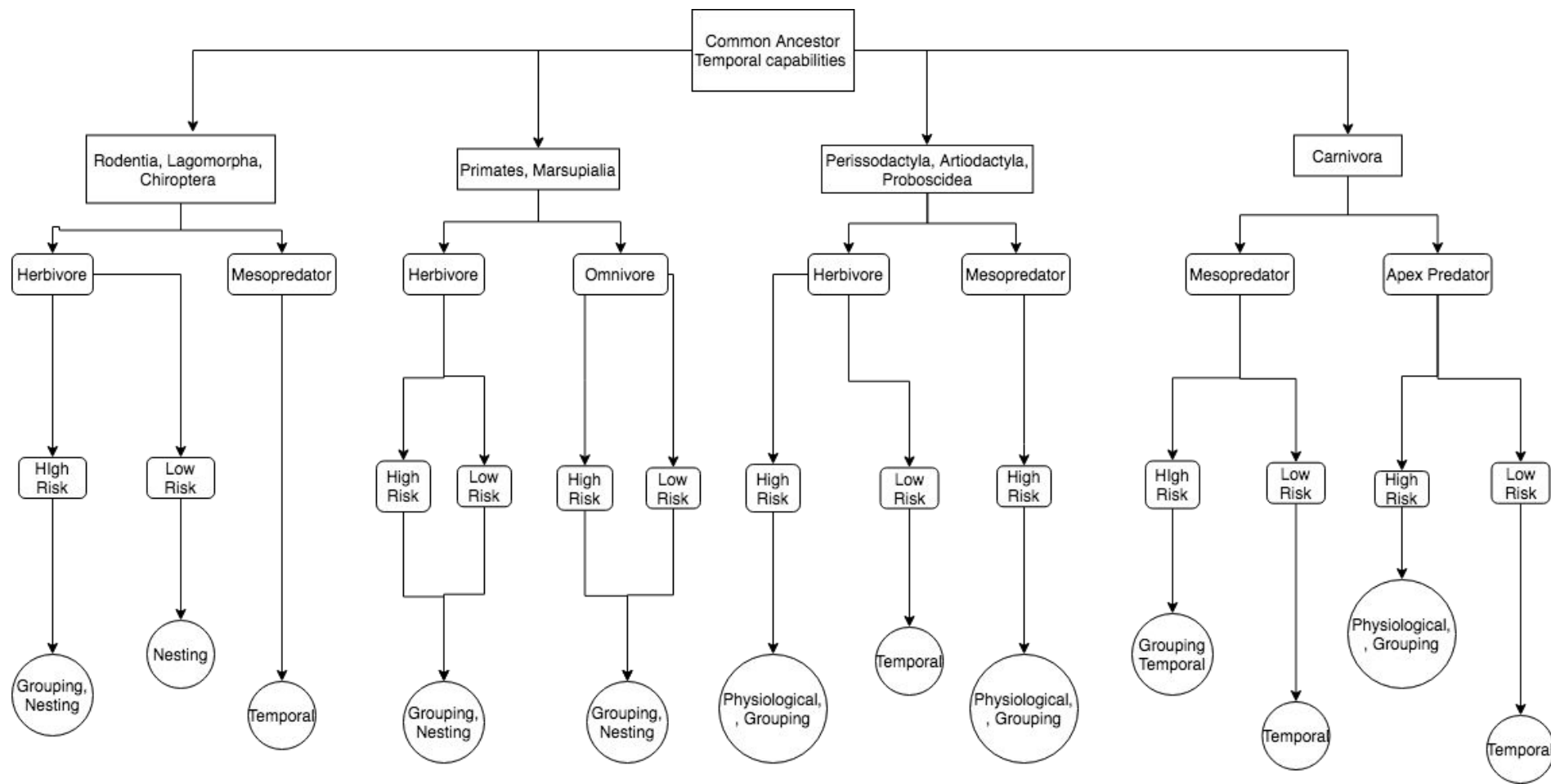
Physiological Adaptations

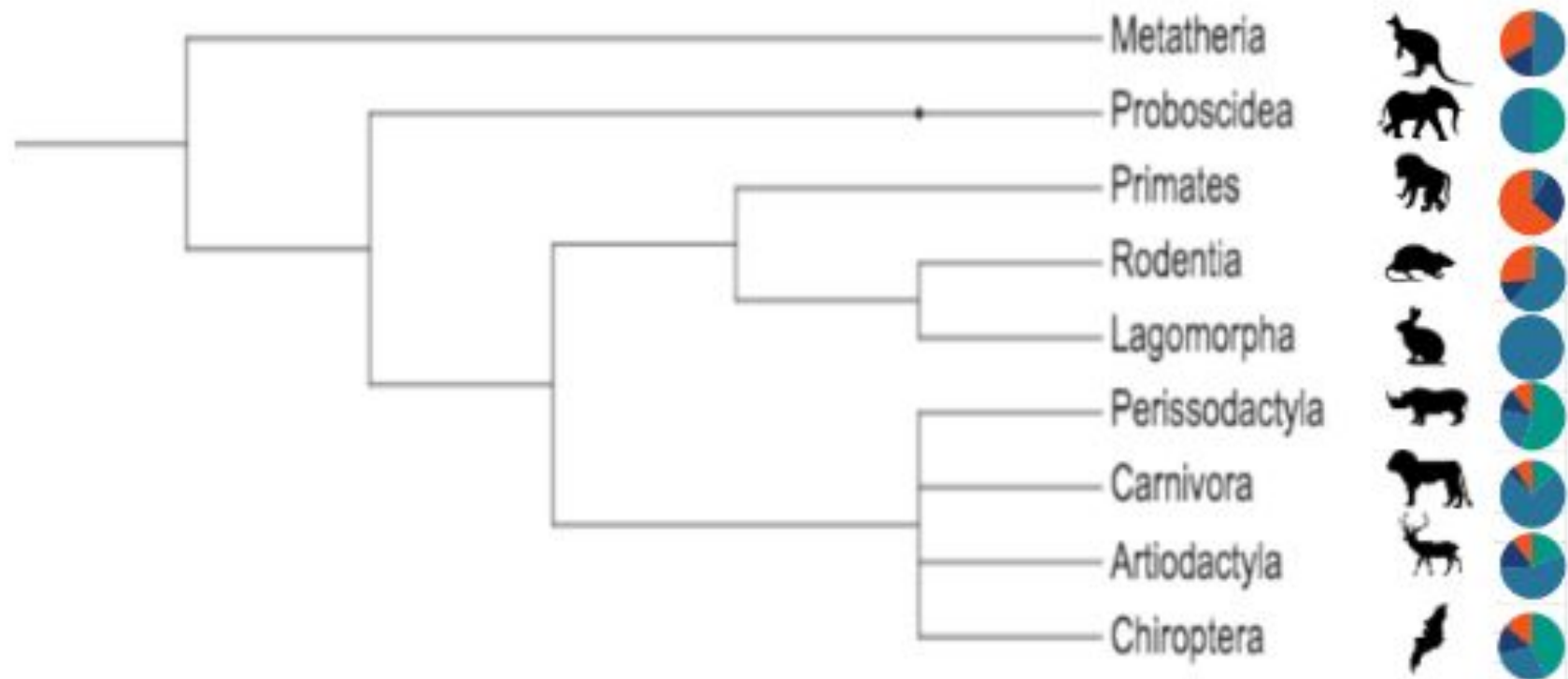


Grouping



Nesting

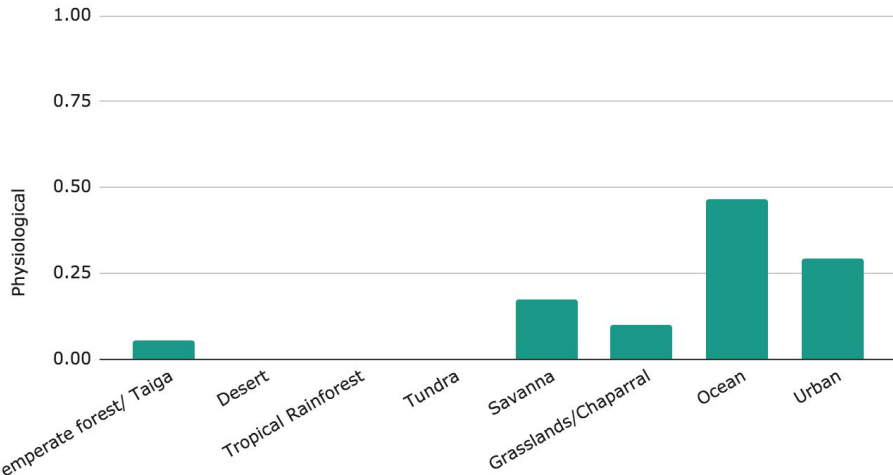




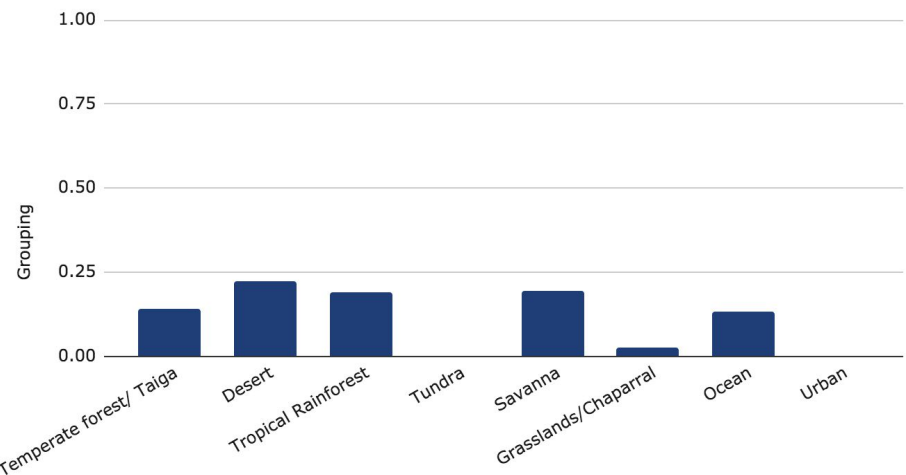
■ Nesting   
 ■ Grouping   
 ■ Temporal   
 ■ Physiological

# Predominant Strategies in High Risk Habitats

## Physiological

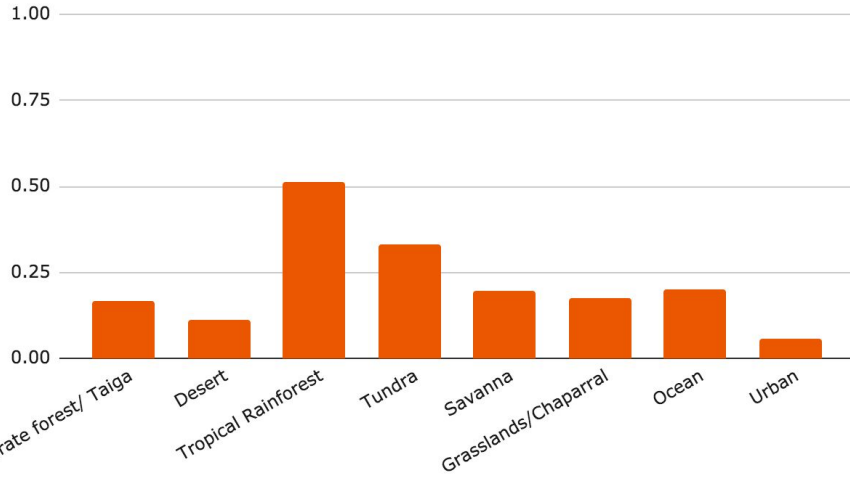


## Grouping

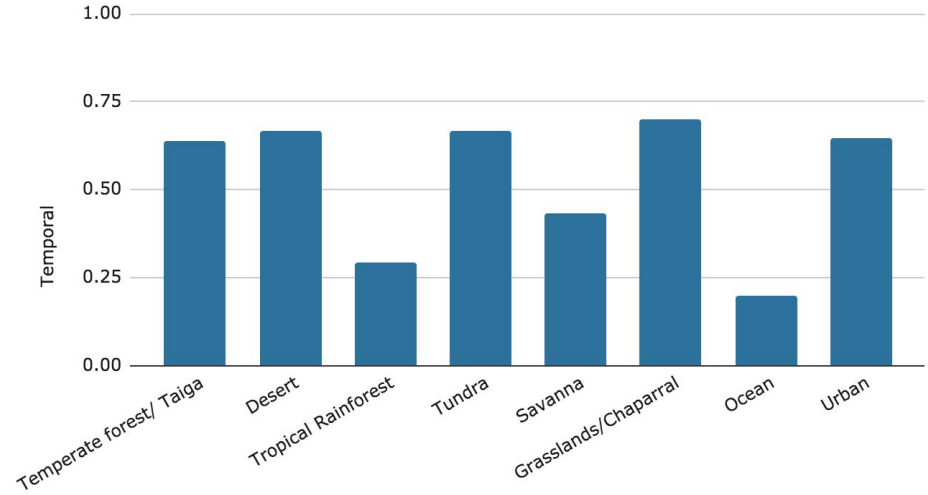


# Predominant Sleeping Strategies in Low Risk or Urban Habitats

## Nesting



## Temporal

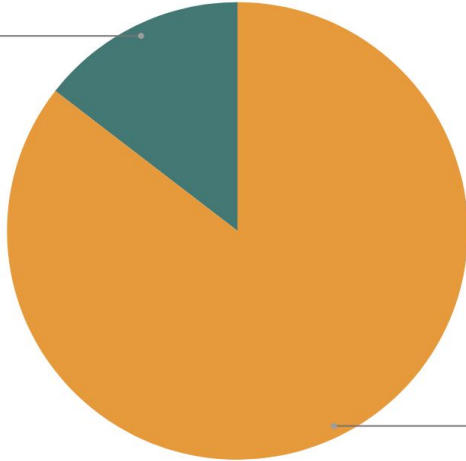




# Top-down Controlled Systems

## Omnivore

Human Interference  
14.5%

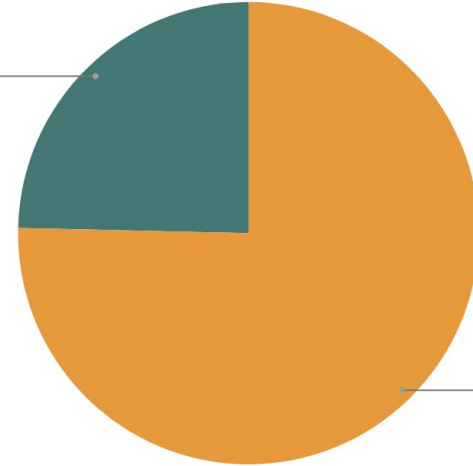


Top Down  
85.5%



## Herbivore

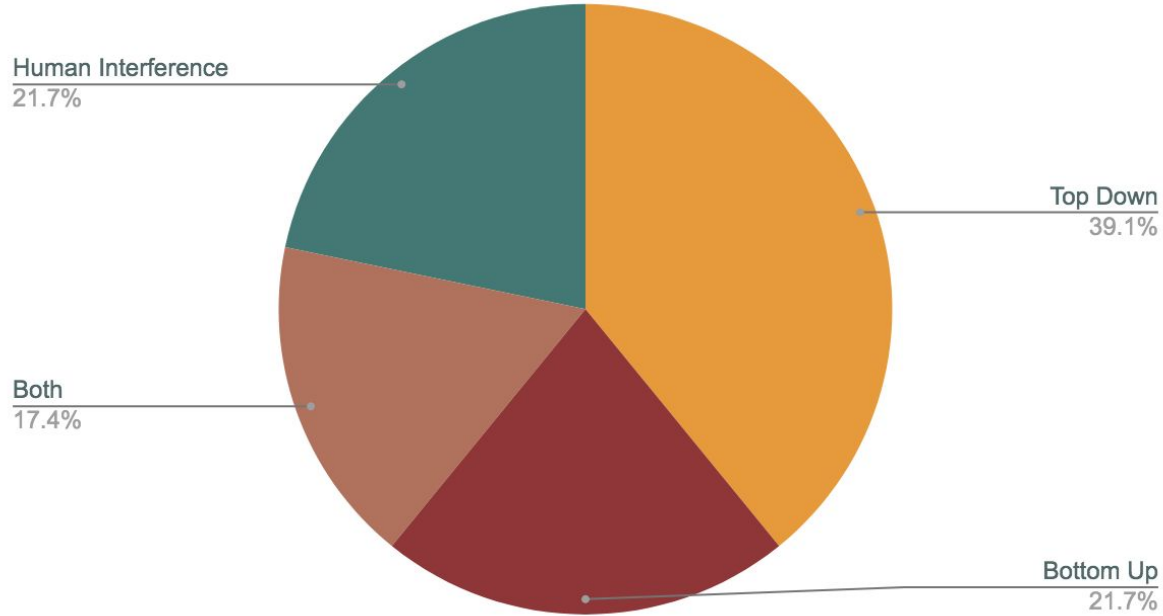
Human Interference  
24.6%



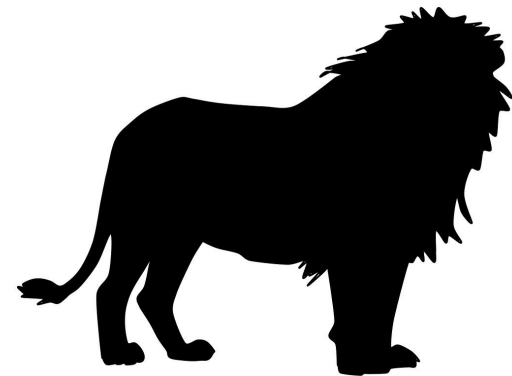
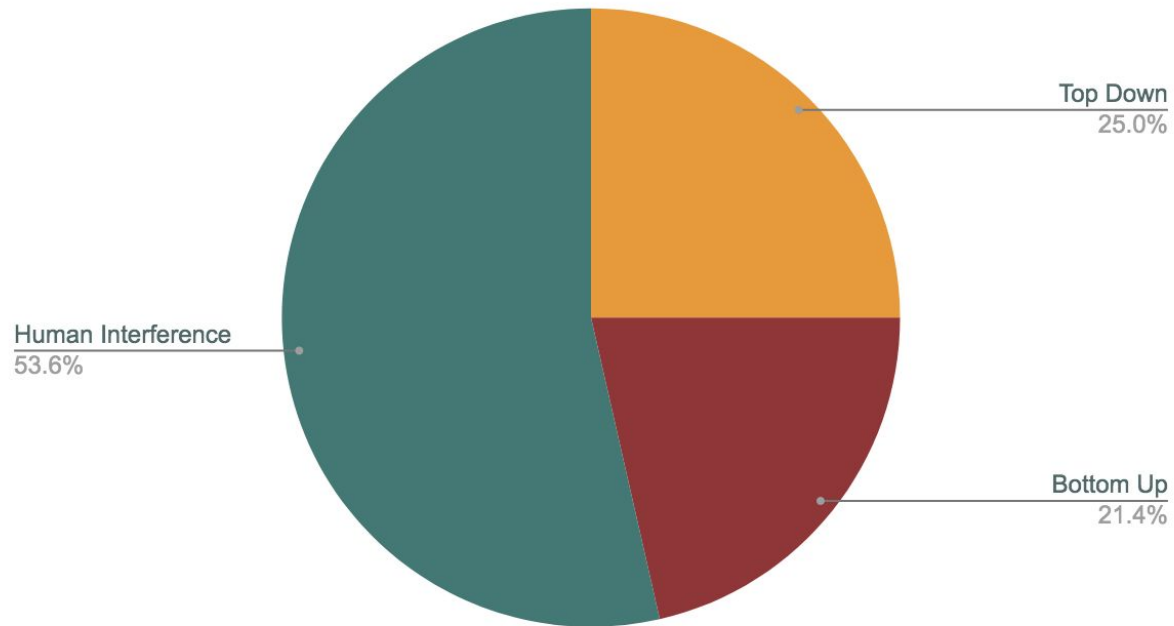
Top Down  
75.4%

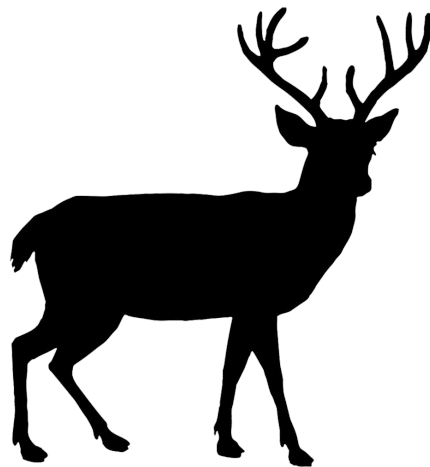
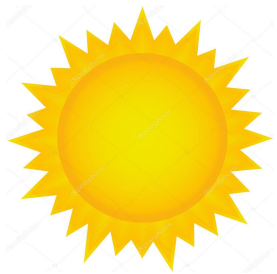


# Meso Carnivores



## Top Carnivores





# Acknowledgements

Roxanne Beltran

Kathryn Bernier

Abe Borker

Timothy Brown

Flavia Oliveira

Sushmita Poudel

Kyle Reid

Erika Zavaleta